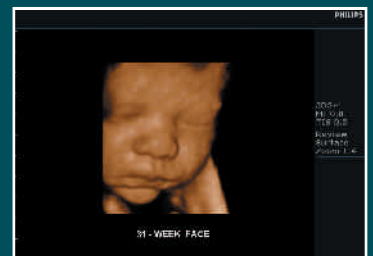
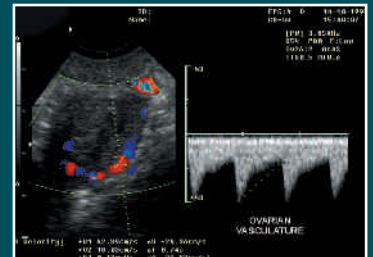




## UP-25MD Video Color Printer

The Sony UP-25MD color printer is the ideal choice for the ultrasound, endoscopy and microscopy applications. The compact high-speed medical device delivers excellent quality, 423 dpi resolution prints in less than 20 seconds and easily integrates into any medical cart with its slim 8-3/8" form factor. The UP-25MD printer's convenient front-panel design offers user-friendly menus, flexible color adjustment and two-user presets. The device provides LED notification of data transmission and the print cartridge status. The UP-25MD accepts standard Sony color print media as well as an optional laminated media model, providing long-lasting picture quality with high resistance to water and fingerprints.

- Slim Compact Design — Ideal for medical carts; easily integrated
- HDTV signal support — 1080i and 720p
- Versatile Analog Video Inputs and Outputs
- PAL & NTSC compatible, all standard interfaces
- Excellent Print Quality with Sony's Dye Sublimation Printing Technology
- High resolution — 423 dpi
- New LCD Front Panel Screen design



# Specifications

## General

Printing Method	Dye Sublimation Thermal Printing
Thermal Head	423 DPI
Gradations	YMC images using 8 bit/256 gradations per color, approx. 16.77 million colors per pixel
Resolution	423 DPI
Printed Picture Size	UPC-21L/UPC-24LA Size: Full 5" X 3 3/4" UPC-21S/UPC-24SA Size: Full 3 3/4" X 2 7/8"
Print Speed	NTSC: UPC-21S approx. 19 sec. UPC-21L approx. 29 sec.
Print Speed (Laminated Media)	NTSC: UPC-24SA approx. 25 sec. UPC-24LA approx. 36 sec.
Paper Capacity	S size tray: Max. 80 sheets L size tray: Max 50 sheets
Paper Capacity Laminated	S size tray: Max. 60 sheets L size tray: Max 40 sheets
Power Consumption	AC 100 to 240V, 50/60Hz
Input Current	1.7-1.0 A
Dimensions	8 3/8" X 3 7/8" X 15 5/8" (WHD)
Weight	12.6 lbs.
Video Input	RGB/YPbPr (BNC X 3) S Video (4-pin min-DIN X 1) Composite Video (BNC X 1)
Media	UPC-21L (L size standard color print pack) (4 X 50 packs) UPC-21S (S size standard color print pack) (3 X 80 packs) UPC-24LA (L size laminated color print pack) (4 X 40 packs) UPC-24SA (S size laminated color print pack) (3 X 60 packs)

## Safety Standards

UL60601-1, UL60950-1  
CSA C22.2 No.601.1, CSA C22.2 No.60950-1  
EMC: FCC: Part 15 Subpart B Digital Device Class A  
IC: ICES-003 Class A Digital Apparatus

## Supplied Accessories

AC Power Cable  
Instruction Manual (PDF)  
Warranty Card (1) (for customers in the U.S.A. and Canada)  
Paper tray (L Size)  
Stopper (1)  
Printing Media (UPC-21L, 50 sheets & 1 ribbon)  
Cleaning Cartridge (1)

## HATCH MEDICAL PRODUCTS, INC.

3915 W. Greenfield Ave.  
Milwaukee, WI 53215  
PH: 1-414-383-3800  
1-800-240-0005  
FAX: 1-414-383-3836  
email: [sales@hatchmpi.com](mailto:sales@hatchmpi.com)

[www.hatchmedicalproducts.com](http://www.hatchmedicalproducts.com)

UP-25MD Back View



©2010 Sony Corporation. All rights reserved. Reproduction in whole or in part without written permission is prohibited. Features and specifications are subject to change without notice. All non-metric weights and measures are approximate. Sony and Sony logo are trademarks of Sony.

Caution: Federal (USA) law restricts this device to sale by or on the order of a physician or other appropriately licensed medical professional.  
Caution: See product labeling for indications, contraindications, warnings, cautions and directions for use.

ME-UP-25MD

## Optional Accessories

### Printing Media (UPC-21L, UPC-21S)



### Printing Media Laminated (UPC-24LA, UPC-24SA)



FS24 — Foot Switch  
RM91 — Remote Control  
RM5500 — Remote Control

# SONY®

Sony Electronics Inc.  
1 Sony Drive  
Park Ridge, NJ 07656

[www.sony.com/medical](http://www.sony.com/medical)